



**Addition and Alterations:  
St. Charles West High School & Success Campus  
City of St. Charles School District R-VI**

**ADDENDUM #2**

**Date:** May 9, 2019

**Prepared for:** City of St. Charles School District R-VI

**DHA Project Number:** 19001

**Architect:** Dickinson Hussman Architects  
11 East Lockwood Avenue  
Suite 200  
St. Louis, Missouri 63119  
314-727-8500

This addendum is hereby made part of the contract documents of the above referenced project. This addendum supplements and/or amends the originally issued documents and all related addenda.

**SUCCESS CAMPUS ADDENDUM ITEMS**

1. Sheet AD1.1-S: Revise First Floor Demolition Plan to remove section of wall to replace door at Boy's Restroom per attached supplementary drawing AX-07.
2. Sheet A1.1-S: Revise First Floor Plan for new door to Boy's Restroom per attached supplementary drawing AX-08.
3. Sheet A6.1: Add new door S-101 to the Door Schedule as follows:

DOOR NO.	DOOR TYPE	DOOR COLOR	DOOR SIZE (WIDTH x HEIGHT)	FRAME TYPE	FRAME DEPTH	FRAME COLOR	HEAD DETAIL	JAMB DETAIL	SILL DETAIL	DOOR LABEL	REMARKS
S-101	A	WD-1	3'-0"x7'-0"	HM-1	5-3/4"	PT-3	3C/A6.1	3D/A6.1	-	45 MIN	

4. Sheet S1.4-W: Modify Typical Steel Lintel in Existing Wall details and notes per attached supplemental drawing SX-05.
5. Specification Section 08710 Door Hardware: Add door S-101 to Hardware Group 05.1.
6. Specification Section 09671 Resinous Flooring: Modify Paragraph 2.1A to add Stontec ERF by The Stonhard Group as an acceptable product. Color to match Architect's sample.

**ST. CHARLES WEST HIGH SCHOOL ADDENDUM ITEMS**

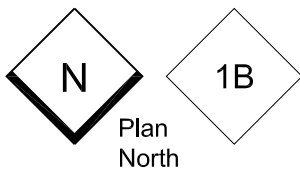
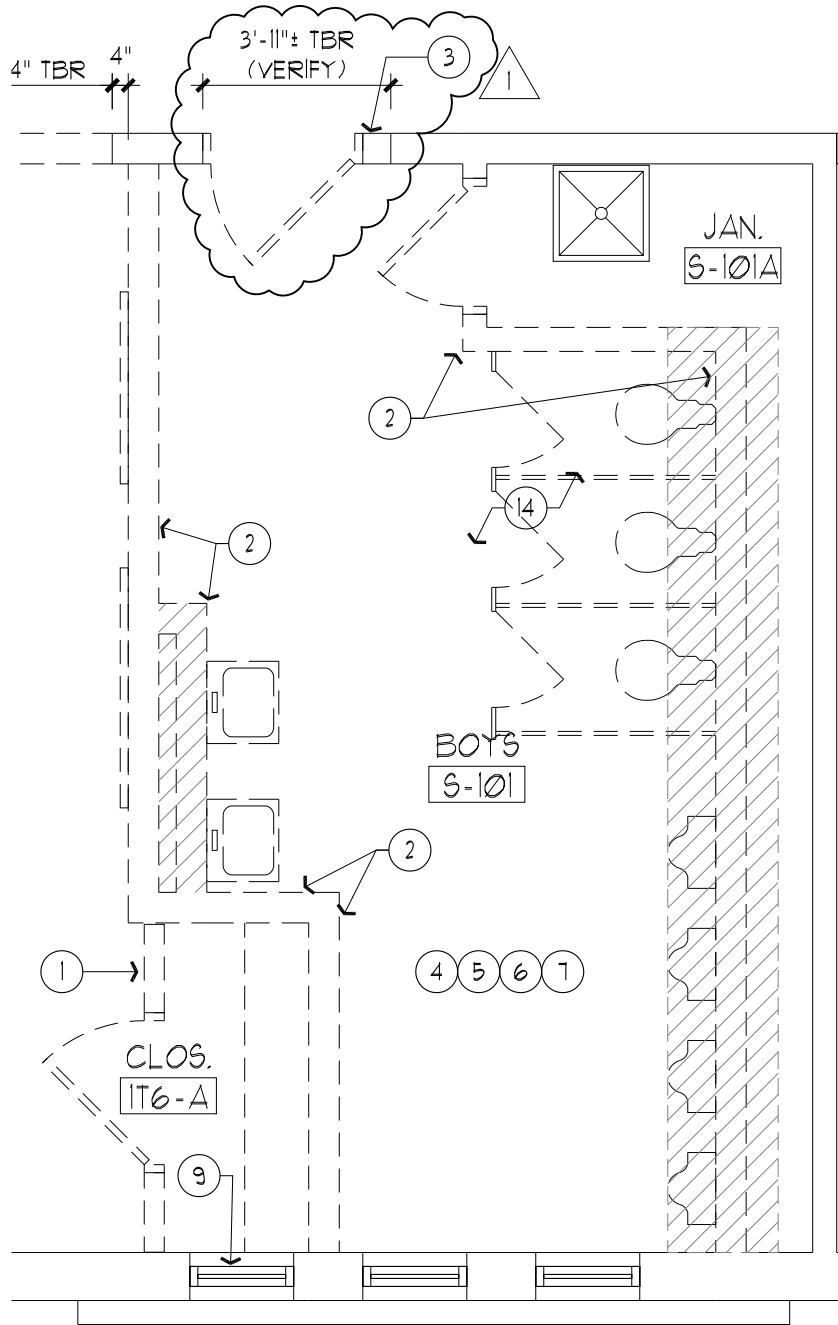
1. All concealed plywood shall be exterior grade fire retardant treated, typical.
2. Sheet AD1.1-W: Existing card reader and intercom at the Main Entry are to be relocated by the Owner prior to the start of construction as noted in attached supplementary drawing AX-09.

3. Sheet A1.1-W: Existing card reader and intercom at the Main Entry are to be relocated by the Owner prior to the start of construction as noted in attached supplementary drawing AX-10.
4. Sheet A8.1-W: Modify 3C First Floor Finish Plan – Main Entry – Alternate #2 per attached supplemental drawing AX-11.
5. Sheet ED1.0-W St. Charles West HS Electrical Demo Plan: Revise Keyed Note #9 as follows: "Remove existing Aiphone, all associated handsets, and wiring and return to owner. Relocate ADA door access switch and associated bollard to new location shown on new work plan. Card reader to be relocated by owner prior to construction."
6. Sheet E1.0-W St. Charles West HS Power New Work Plan: See attached supplemental drawing EX-01 for revised main entry door control.
7. Specification Section 08710 Door Hardware: Revise per attached Revised Hardware Group for the following:
  - a. Group 00.1 Delete door W-110A from hardware group.
  - b. Group 00.1A Add new hardware group.
  - c. Group 02.1 Delete hardware group in its entirety.
  - d. Group 08.2 Add new hardware group.

ATTACHMENTS:

1. Hardware Groups, dated May 7, 2019 (7 pages)
2. Success Campus: Architectural supplemental drawings AX-07 and AX-08.
3. Success Campus: Structural supplemental drawing SX-05.
4. St. Charles West High School: Architectural supplemental drawings AX-09 through AX-11.
5. St. Charles West High School: Electrical supplemental drawing EX-01.

**END OF ADDENDUM #2**



# FIRST FLOOR DEMOLITION PLAN

SCALE: 1/4" = 1'-0"



Project Name:

Additions and Alterations:

City of St. Charles School District

**St. Charles West High School**, 3601 Droste Road, St. Charles, MO 63301

**Success Campus**, 1600 Waverly Street, St. Charles, MO 63301

DATE: May 9, 2019  
 PROJ. NO.: 19001  
 Addendum 2

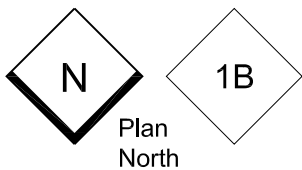
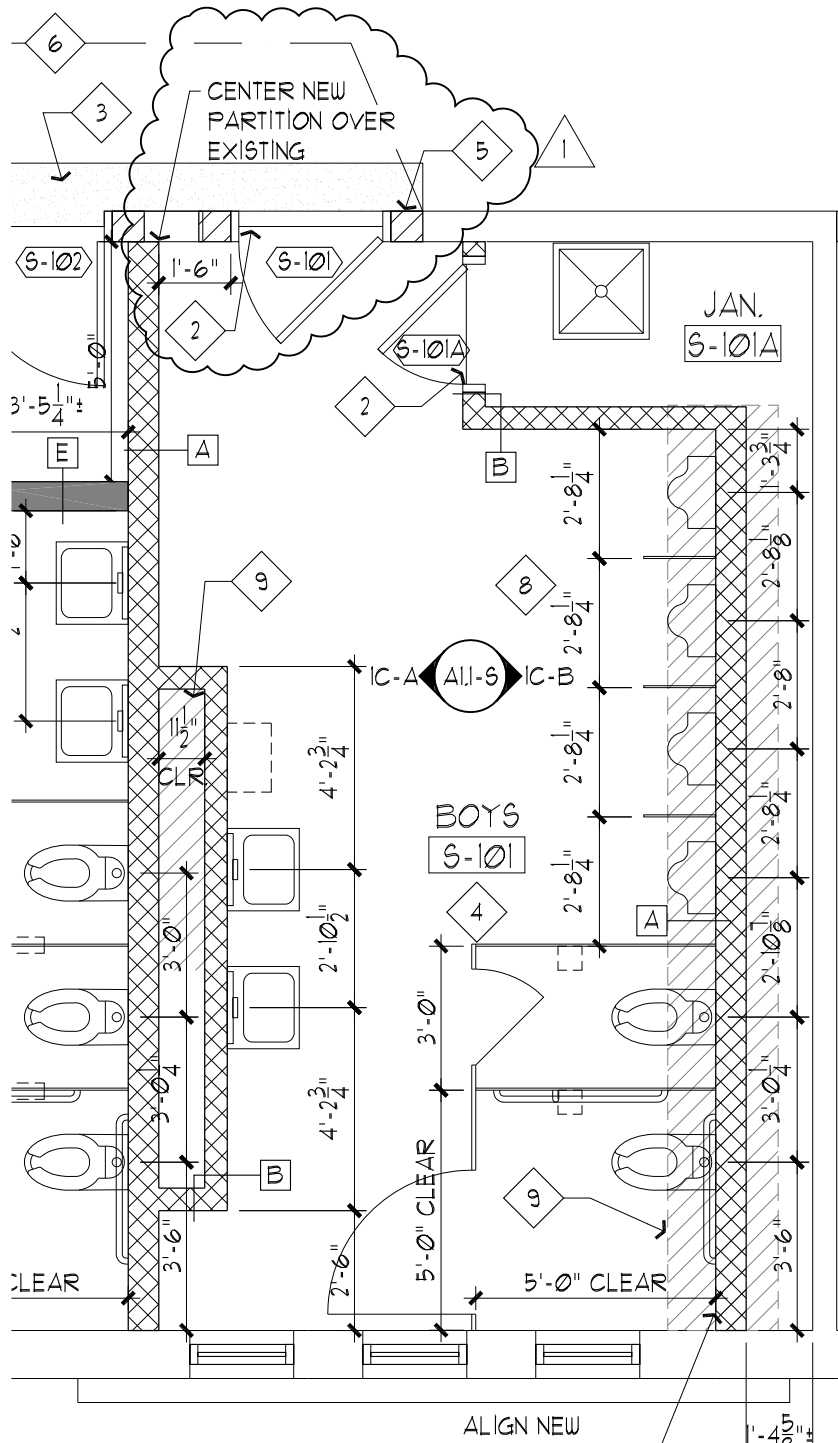
ARCHITECT

11 East Lockwood Avenue, Ste. 200  
 St. Louis, MO 63119  
 T 314 727 8500 F 314 727 4040  
 www.dharch.com  
 DICKINSON HUSSMAN ARCHITECTS

ORIGINAL DRAWING  
 ORIGINAL DRAWING DATE

AD1.1-S  
 April 23, 2019

**AX-07**  
 Success Campus



# FIRST FLOOR PLAN

SCALE: 1/4" = 1'-0"



Project Name:

Additions and Alterations:

City of St. Charles School District

**St. Charles West High School**, 3601 Droste Road, St. Charles, MO 63301

**Success Campus**, 1600 Waverly Street, St. Charles, MO 63301

Addendum 2  
 DATE May 9, 2019  
 PROJ. NO. 19001

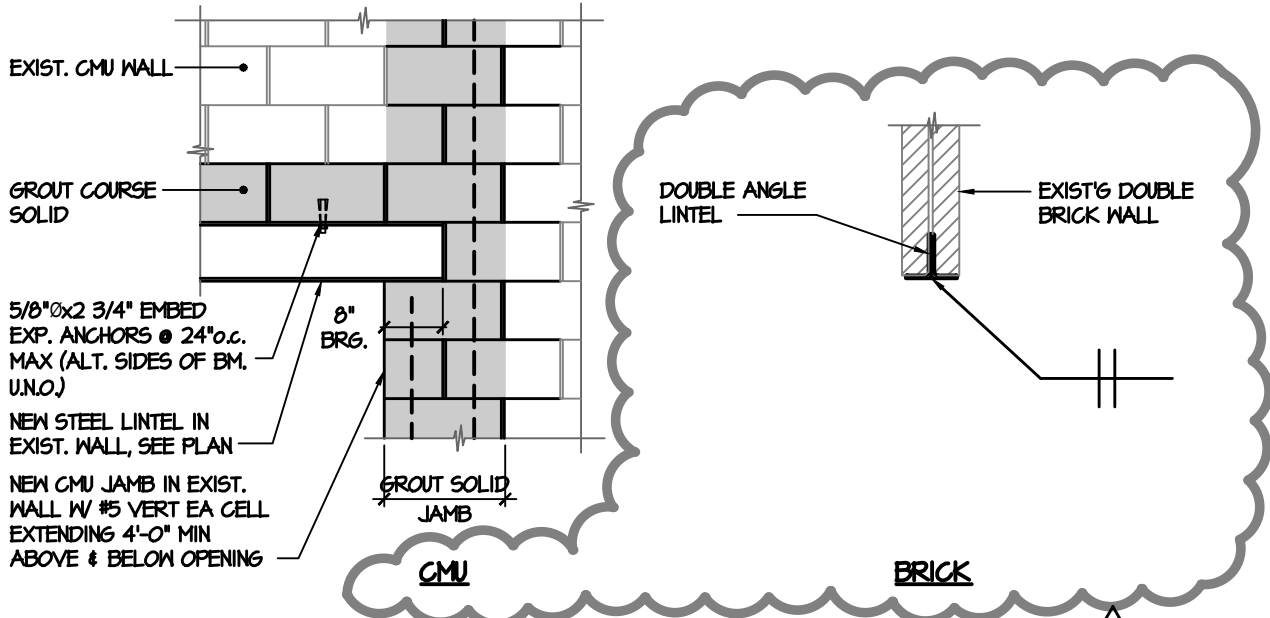
ARCHITECT

11 East Lockwood Avenue, Ste. 200  
 St. Louis, MO 63119  
 T 314 727 8500 F 314 727 4040  
 www.dharch.com  
 DICKINSON HUSSMAN ARCHITECTS

ORIGINAL DRAWING  
 ORIGINAL DRAWING DATE

A1.1-S  
 April 23, 2019

**AX-08**  
 Success Campus



**TYPICAL STEEL LINTEL IN EXISTING WALL**

**LINTEL NOTES:**

1. GROUT SHALL BE 3000 P.S.I. 2
2. STEEL BEAM LINTELS AND BOTTOM PLATES SHALL BEAR 8" MINIMUM EACH END, U.N.O. DOUBLE ANGLE LINTEL SHALL BEAR 4" MINIMUM EACH END. 2
3. STEEL BEAM LINTEL BOTTOM PLATES SHALL BE 3/8" x 1" LESS THAN THE NOMINAL WIDTH OF THE WALL. 2
4. PROVIDE A DOUBLE L 6x3 1/2x3/8 (LLV) LINTEL AT NEW DOORS S-101 & S-102 AT SUCCESS CAMPUS RENOVATION. LINTEL SIZE ASSUMES A MAXIMUM ROOF LOAD TRIBUTARY AREA OF 20'-0" (FIELD VERIFY). 2



Project Name: Additions and Alterations:  
 City of St. Charles School District  
**St. Charles West High School**, 3601 Droste Road, St. Charles, MO 63301  
**Success Campus**, 1600 Waverly Street, St. Charles, MO 63301

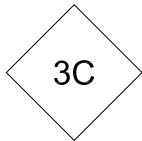
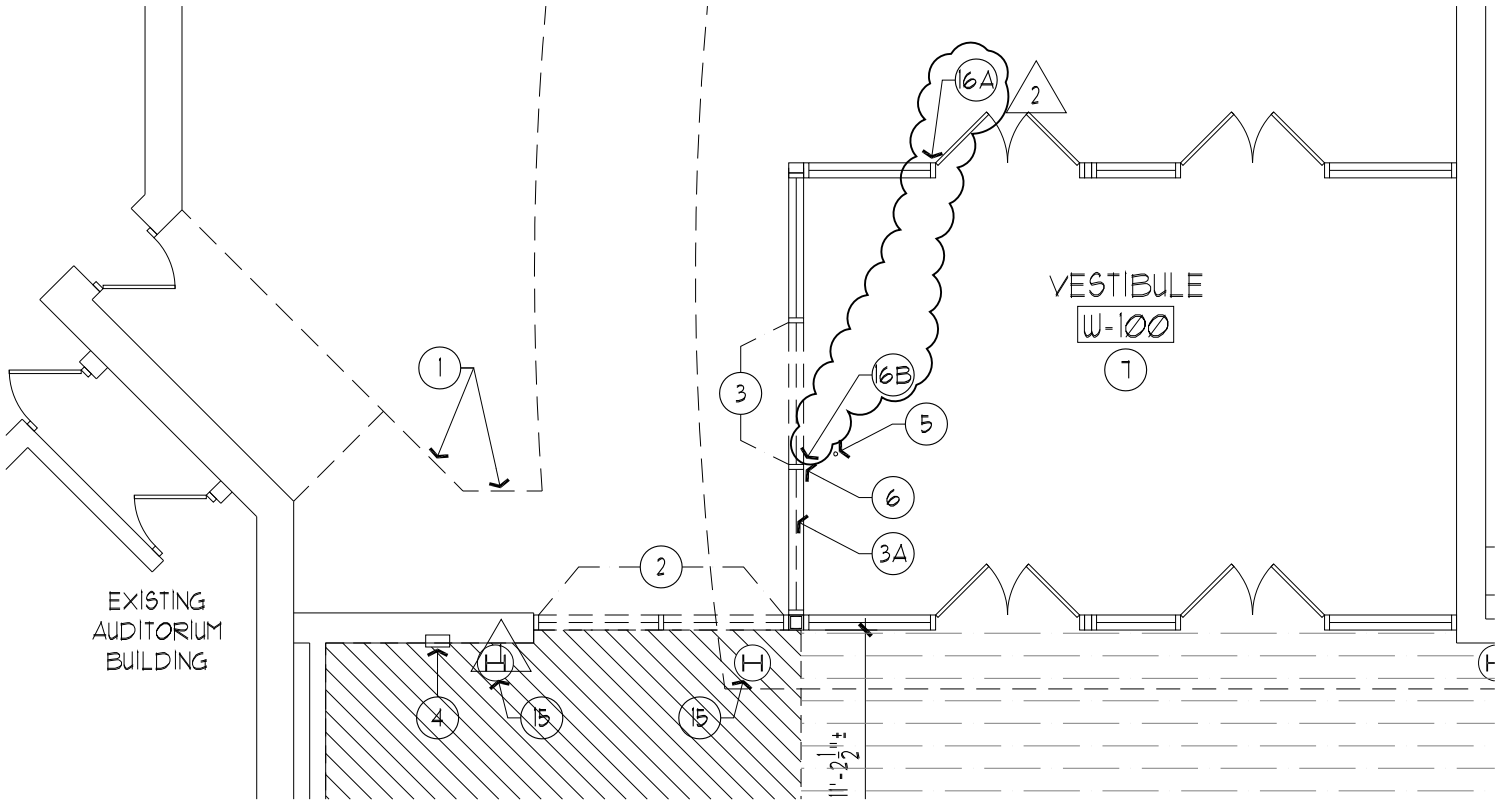
ARCHITECT  
 11 East Lockwood Avenue, Ste. 200  
 St. Louis, MO 63119  
 T 314 727 8500 F 314 727 4040  
 www.dharch.com  
 DICKINSON HUSSMAN ARCHITECTS

ADDENDUM #2  
 ORIGINAL DRAWING  
 ORIGINAL DRAWING DATE

S1.4-W  
 April 23, 2019

DATE May 09, 2019  
 PROJ. NO. AAI# 19014

**SX-05**



**FIRST FLOOR  
DEMOLITION PLAN - MAIN ENTRY**  
SCALE: 1/8" = 1'-0"

**DEMOLITION PLAN KEY NOTES (THIS SHEET)**

6 EXISTING INTERCOM TO BE RELOCATED BY OWNER PRIOR TO START OF DEMOLITION. CONTRACTOR TO FIELD VERIFY NEW LOCATION PRIOR TO START OF WORK. PROTECT THROUGHOUT DEMOLITION AND CONSTRUCTION ACTIVITIES.

16A EXISTING CARD READER TO REMAIN. CONTRACTOR TO PROTECT THROUGHOUT DEMOLITION AND CONSTRUCTION ACTIVITIES.

16B EXISTING CARD READER TO BE RELOCATED BY OWNER PRIOR TO START OF CONSTRUCTION. CONTRACTOR TO FIELD VERIFY NEW LOCATION. PROTECT THROUGHOUT DEMOLITION AND CONSTRUCTION ACTIVITIES.



Project Name: Additions and Alterations:  
City of St. Charles School District  
**St. Charles West High School**, 3601 Droste Road, St. Charles, MO 63301  
**Success Campus**, 1600 Waverly Street, St. Charles, MO 63301

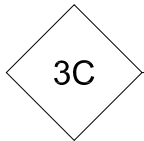
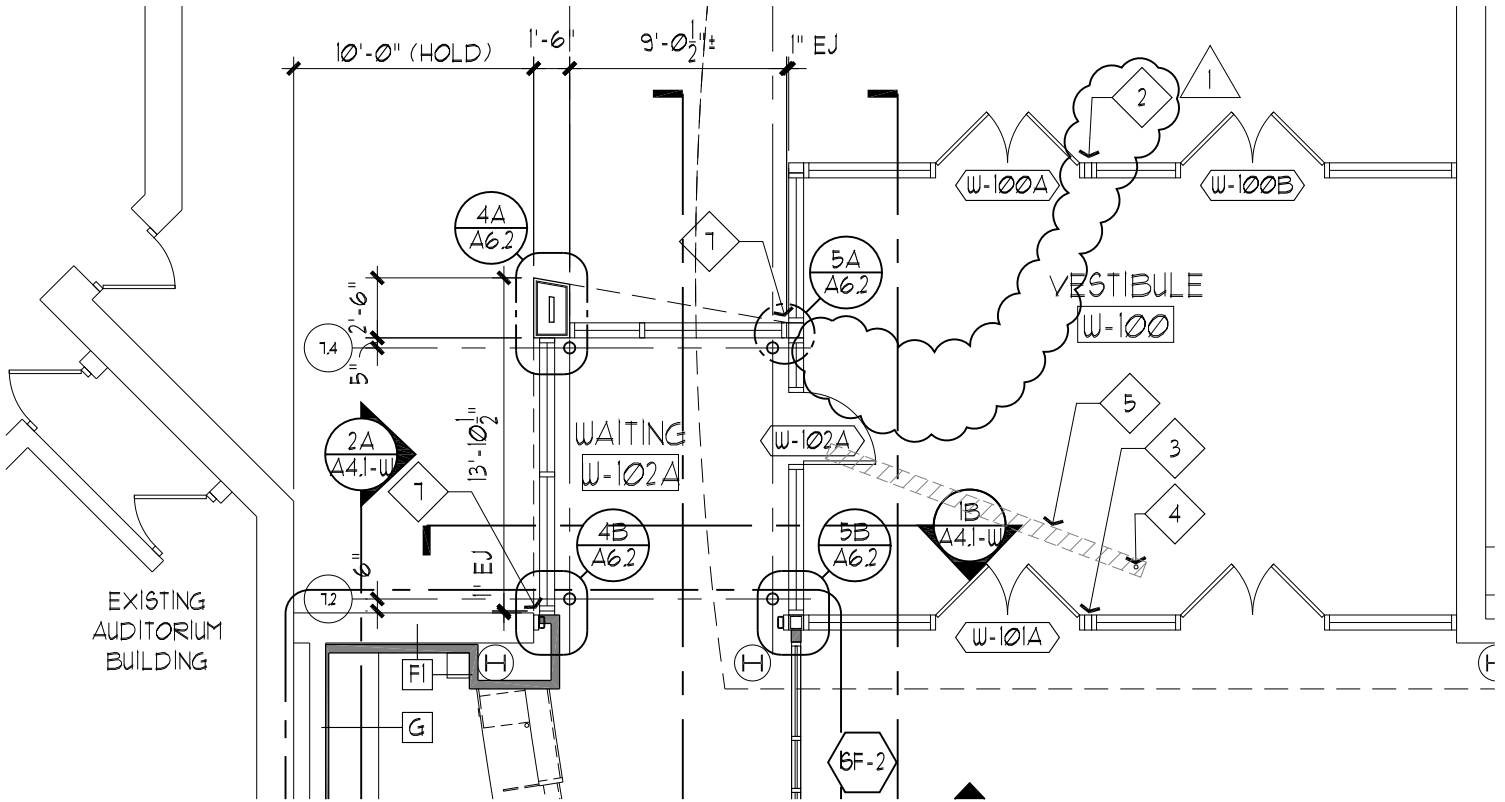
Addendum 2  
DATE May 9, 2019  
PROJ. NO. 19001

ARCHITECT  
11 East Lockwood Avenue, Ste. 200  
St. Louis, MO 63119  
T 314 727 8500 F 314 727 4040  
www.dharch.com  
DICKINSON HUSSMAN ARCHITECTS

ORIGINAL DRAWING  
ORIGINAL DRAWING DATE

AD1.1-W  
April 23, 2019

**AX-09**  
**St. Charles West High School**



## FIRST FLOOR PLAN - MAIN ENTRY

SCALE: 1/8" = 1'-0"

### FLOOR PLAN KEY NOTES (THIS SHEET)

- 1 SEMI-RECESSED FIRE EXTINGUISHER CABINET WITH MPIO FIRE EXTINGUISHER. SEE DETAIL 2B/A1.3.
- 2 INTERCOM TO BE RELOCATED BY OWNER PRIOR TO START OF CONSTRUCTION - FIELD VERIFY NEW LOCATION (TBD). CONTRACTOR TO PROTECT THROUGHOUT DURATION OF CONSTRUCTION ACTIVITIES.
- 3 CARD READER TO BE RELOCATED BY OWNER PRIOR TO START OF CONSTRUCTION - FIELD VERIFY NEW LOCATION (TBD). CONTRACTOR TO PROTECT THROUGHOUT DURATION OF CONSTRUCTION ACTIVITIES.



Project Name:

Additions and Alterations:

City of St. Charles School District

**St. Charles West High School**, 3601 Droste Road, St. Charles, MO 63301

**Success Campus**, 1600 Waverly Street, St. Charles, MO 63301

Addendum 2  
 DATE May 9, 2019  
 PROJ. NO. 19001

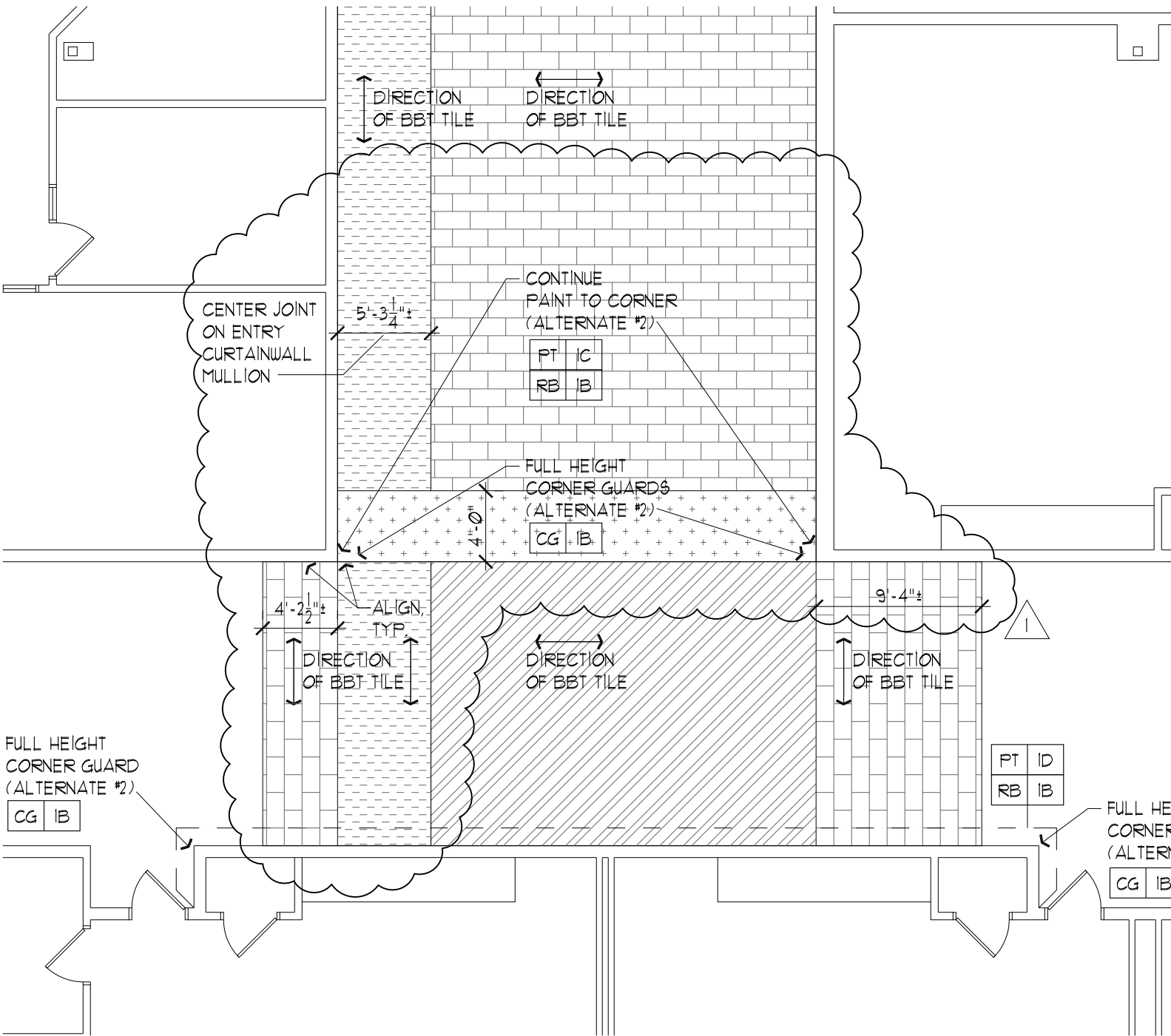
ARCHITECT

11 East Lockwood Avenue, Ste. 200  
 St. Louis, MO 63119  
 T 314 727 8500 F 314 727 4040  
 www.dharch.com  
 DICKINSON HUSSMAN ARCHITECTS

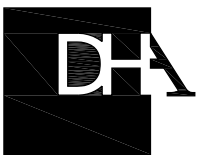
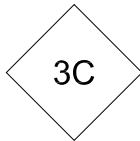
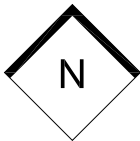
ORIGINAL DRAWING  
 ORIGINAL DRAWING DATE

A1.1-W  
 April 23, 2019

**AX-10**  
**St. Charles West High School**



**FIRST FLOOR FINISH PLAN**  
**MAIN ENTRY - ALTERNATE #2**  
 SCALE: 1/8" = 1'-0"



Project Name:

Additions and Alterations:

City of St. Charles School District

**St. Charles West High School**, 3601 Droste Road, St. Charles, MO 63301

**Success Campus**, 1600 Waverly Street, St. Charles, MO 63301

Addendum 2

DATE

May 9, 2019

PROJ. NO.

19001

ARCHITECT

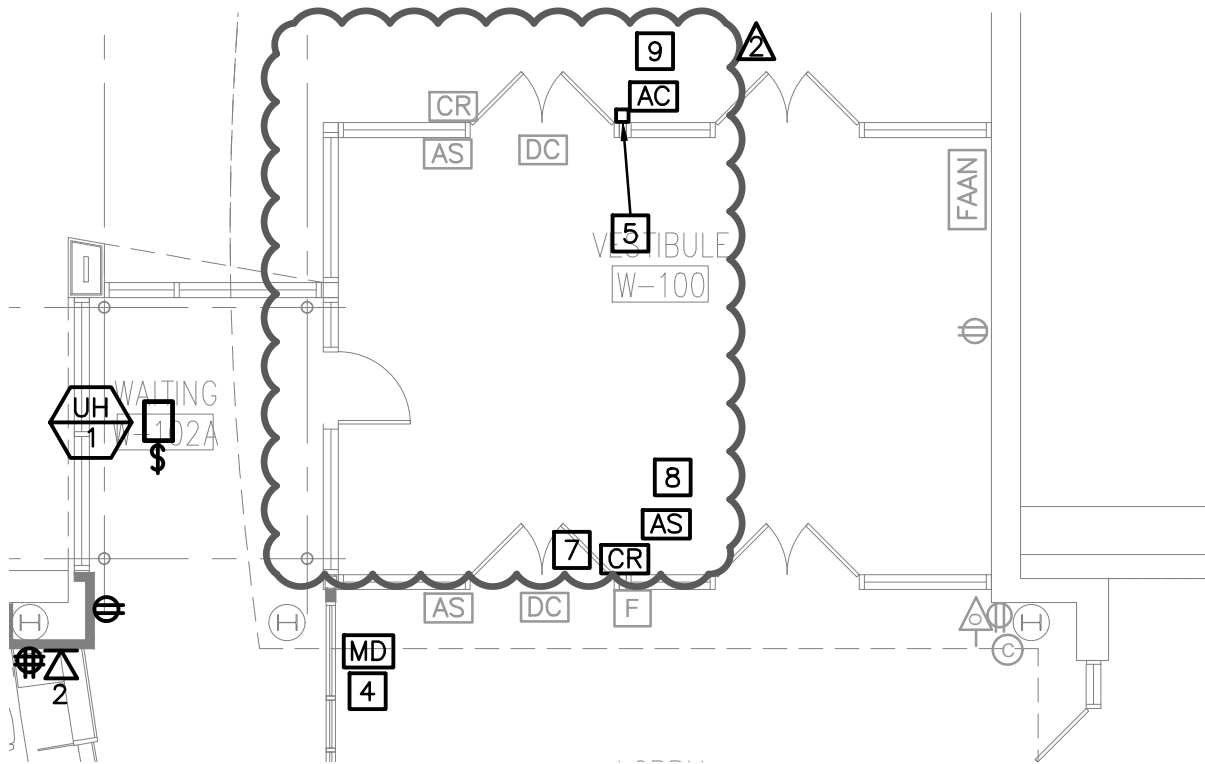
11 East Lockwood Avenue, Ste. 200  
 St. Louis, MO 63119  
 T 314 727 8500 F 314 727 4040  
 www.dharch.com  
 DICKINSON HUSSMAN ARCHITECTS

ORIGINAL DRAWING  
 ORIGINAL DRAWING DATE

A8.1-W  
 April 23, 2019

**AX-11**  
**St. Charles West High School**





# FIRST FLOOR POWER NEW WORK PLAN - MAIN ENTRY

1  
EX-01

SCALE: 1/8"=1'-0"



## KEYED NOTES

- 7] CARD READER TO BE RELOCATED TO NEW LOCATION BY OWNER PRIOR TO CONSTRUCTION. CONTRACTOR SHALL PROTECT AND KEEP OPERATIONAL THROUGHOUT CONSTRUCTION.
- 9] GENETEC INTERCOM ACCESS CONTROLLER TO BE INSTALLED BY OWNER PRIOR TO CONSTRUCTION. CONTRACTOR SHALL PROTECT AND KEEP OPERATIONAL THROUGHOUT CONSTRUCTION.



Project Name:

Additions and Alterations:

City of St. Charles School District

**St. Charles West High School**, 3601 Droste Road, St. Charles, MO 63301

**Success Campus**, 1600 Waverly Street, St. Charles, MO 63301

DATE  
PROJ. NO.

May 9, 2019  
19001

11 East Lockwood Avenue, Ste. 200  
St. Louis, MO 63119  
T 314 727 8500 F 314 727 4040  
www.dharch.com  
DICKINSON HUSSMAN ARCHITECTS

ORIGINAL DRAWING  
ORIGINAL DRAWING DATE

E1.0-W  
April 23, 2019

EX-01

**HARDWARE GROUP NO. 00.1**

For use on door #(s):

~~W-100A~~ W-100B

Provide each PR door(s) with the following:

QTY	DESCRIPTION	CATALOG NUMBER	FINISH	MFR
1	EA THRESHOLD	655A-223	A	ZER
		BALANCE OF HARDWARE EXISTING		

**HARDWARE GROUP NO. 00.1A**

For use on door #(s):

W-100A

Provide each PR door(s) with the following:

<u>QTY</u>	<u>DESCRIPTION</u>	<u>CATALOG NUMBER</u>	<u>FINISH</u>	<u>MFR</u>
<u>1</u>	<u>EA THRESHOLD</u>	<u>655A-223</u>	<u>A</u>	<u>ZER</u>
<u>1</u>		<u>INTERCOM BY OTHERS</u>		
		<u>BALANCE OF HARDWARE</u>		
		<u>EXISTING</u>		

**OPERATIONAL DESCRIPTION**

**INTERCOM TO RELEASE/UNLATCH EXISTING ELECTRIFIED HARDWARE ALLOWING DOOR TO BE OPENED.**

**HARDWARE GROUP NO. 00.2**

For use on door #(s):

W-101A

Provide each PR door(s) with the following:

QTY	DESCRIPTION	CATALOG NUMBER	FINISH	MFR
1	EA BOLLARD POST	8310-866	AL	LCN
		BALANCE OF HARDWARE EXISTING		

REUSE EXISTING CARD READER, ADA OPERATOR AND ACTUATOR BUTTONS.

**HARDWARE GROUP NO. 02.1**

For use on door #(s):

**W-102A**

Provide each SGL door(s) with the following:

QTY		DESCRIPTION	CATALOG NUMBER		FINISH	MFR
4	EA	CONT. HINGE	112XY		US28	IVE
4	EA	STOREROOM LOCK	ND80BD-RHO		626	SCH
4	EA	SFIC CORE	PERMANENT CORE BY OWNER		626	SCH
4	EA	SFIC	DISPOSABLE CORE		626	SCH
4	EA	ELECTRIC STRIKE	6211AL-FSE	✱	630	VON
4	EA	SURFACE CLOSER	4040XP CUSH MC		689	LCN
4		CLOSER BRACKETS, SPACERS, ETC	AS REQ'D			LCN
4	EA	WALL STOP	WS406/407CGV		630	IVE
	SET	WEATHER STRIPPING	BY DOOR/FRAME MFR.			UNK
4	EA	WIRE HARNESS	CON-6W			SCH
4	EA	POWER SUPPLY	PS902 900-8P	✱	LGR	SCE
4			INTERCOM BY OTHERS			

**OPERATIONAL DESCRIPTION**

~~STOREROOM LOCK - OUTSIDE LEVER FIXED. ENTRANCE BY KEY ONLY. INSIDE LEVER ALWAYS UNLOCKED. INSIDE LEVER IS ALWAYS FREE FOR IMMEDIATE EGRESS. INTERCOM TO MOMENTARILY RELEASE ELEC STRIKE. SELF-CLOSING. STOP INCLUDED. PUSH SIDE MOUNTED.~~

**HARDWARE GROUP NO. 02.2**

For use on door #(s):

W-102

Provide each SGL door(s) with the following:

QTY		DESCRIPTION	CATALOG NUMBER		FINISH	MFR
1	EA	CONT. HINGE	112XY		US28	IVE
1	EA	CLASSROOM LOCK	ND70BD RHO		626	SCH
1	EA	SFIC	DISPOSABLE CORE		626	SCH
1	EA	SFIC CORE	PERMANENT CORE BY OWNER		626	SCH
1	EA	MAGNETIC LOCK	M490P	✱	628	SCE
1	EA	SURFACE CLOSER	4040XP SCUSH MC		689	LCN
1		CLOSER BRACKETS, SPACERS, ETC	AS REQ'D			LCN
	SET	WEATHER STRIPPING	BY DOOR/FRAME MFR.			UNK
1	EA	DESK MOUNT BUTTON	660-PB		628	SCE
1	EA	POWER SUPPLY	PS902 900-8P	✱	LGR	SCE

**OPERATIONAL DESCRIPTION**

CLASSROOM LOCK - OUTSIDE LEVER LOCKED AND UNLOCKED BY KEY. INSIDE LEVER ALWAYS UNLOCKED. INSIDE LEVER IS ALWAYS FREE FOR IMMEDIATE EGRESS. SELF-CLOSING. SPRING LOADED STOP INCLUDED. PUSH SIDE MOUNTED. MAG LOCK(S) ACTIVATED BY REMOTE PUSH BUTTON TO "LOCK" DOOR DURING INTRUDER EVENT STOPPING INTRUDER FROM ENTERING THE SCHOOL.

**HARDWARE GROUP NO. 05.1**

For use on door #(s):

S-101 S-102

Provide each SGL door(s) with the following:

QTY		DESCRIPTION	CATALOG NUMBER	FINISH	MFR
3	EA	HINGE	5BB1HW 4.5 X 4.5	652	IVE
1	EA	PASSAGE SET	ND10S RHO	626	SCH
1	EA	SURFACE CLOSER	4040XP MC	689	LCN
1	EA	KICK PLATE	8400 10" X 2" LDW B-CS	630	IVE
1	EA	WALL STOP	WS406/407CCV	630	IVE
1	EA	GASKETING	488SBK PSA	BK	ZER

FIRE RATED OPENING

OPERATIONAL DESCRIPTION

PASSAGE LOCK – NEITHER LEVER LOCKABLE. BOTH LEVERS ALWAYS FREE FOR IMMEDIATE INGRESS OR EGRESS. SELF CLOSING. PULL SIDE MOUNTED

**HARDWARE GROUP NO. 05.2**

For use on door #(s):

W-113B W-114B

Provide each SGL door(s) with the following:

QTY		DESCRIPTION	CATALOG NUMBER	FINISH	MFR
3	EA	HINGE	5BB1HW 5 X 4.5	652	IVE
1	EA	PASSAGE SET	ND10S RHO	626	SCH
1	EA	OH STOP	100S	630	GLY
1	EA	SURFACE CLOSER	4040XP MC ST-1630	689	LCN
1		CLOSER BRACKETS, SPACERS, ETC	AS REQ'D		LCN
1	EA	KICK PLATE	8400 10" X 2" LDW B-CS	630	IVE
1	EA	GASKETING	488SBK PSA	BK	ZER

FIRE RATED OPENING

OPERATIONAL DESCRIPTION

PASSAGE LOCK – NEITHER LEVER LOCKABLE. BOTH LEVERS ALWAYS FREE FOR IMMEDIATE INGRESS OR EGRESS. SELF CLOSING. PULL SIDE MOUNTED CONCEALED OVERHEAD STOP

**HARDWARE GROUP NO. 08.1**

For use on door #(s):

W-113A            W-114A

Provide each SGL door(s) with the following:

QTY		DESCRIPTION	CATALOG NUMBER	FINISH	MFR
3	EA	HINGE	5BB1HW 5 X 4.5	652	IVE
1	EA	CLASSROOM LOCK	ND70BD RHO	626	SCH
1	EA	SFIC CORE	PERMANENT CORE BY OWNER	626	SCH
1	EA	SFIC	DISPOSABLE CORE	626	SCH
1	EA	SURFACE CLOSER	4040XP SCUSH MC	689	LCN
1	EA	KICK PLATE	8400 10" X 2" LDW B-CS	630	IVE
1	EA	GASKETING	488SBK PSA	BK	ZER

FIRE RATED OPENING

OPERATIONAL DESCRIPTION

CLASSROOM LOCK - OUTSIDE LEVER LOCKED AND UNLOCKED BY KEY. INSIDE LEVER ALWAYS UNLOCKED. INSIDE LEVER IS ALWAYS FREE FOR IMMEDIATE EGRESS. SELF-CLOSING. SPRING LOADED STOP INCLUDED. PUSH SIDE MOUNTED.

**HARDWARE GROUP NO. 08.2**

For use on door #(s):

W-102A

Provide each SGL door(s) with the following:

<u>QTY</u>		<u>DESCRIPTION</u>	<u>CATALOG NUMBER</u>	<u>FINISH</u>	<u>MFR</u>
<u>1</u>	<u>EA</u>	<u>CONT. HINGE</u>	<u>112XY</u>	<u>US28</u>	<u>IVE</u>
<u>1</u>	<u>EA</u>	<u>CLASSROOM LOCK</u>	<u>ND70BD RHO</u>	<u>626</u>	<u>SCH</u>
<u>1</u>	<u>EA</u>	<u>SFIC</u>	<u>DISPOSABLE CORE</u>	<u>626</u>	<u>SCH</u>
<u>1</u>	<u>EA</u>	<u>SFIC CORE</u>	<u>PERMANENT CORE BY OWNER</u>	<u>626</u>	<u>SCH</u>
<u>1</u>	<u>EA</u>	<u>SURFACE CLOSER</u>	<u>4040XP CUSH MC</u>	<u>689</u>	<u>LCN</u>
<u>1</u>		<u>CLOSER BRACKETS,</u>	<u>AS REQ'D</u>		<u>LCN</u>
		<u>SPACERS, ETC</u>			
	<u>SET</u>	<u>WEATHER STRIPPING</u>	<u>BY DOOR/FRAME MFR.</u>		<u>UNK</u>

OPERATIONAL DESCRIPTION

CLASSROOM LOCK - OUTSIDE LEVER LOCKED AND UNLOCKED BY KEY. INSIDE LEVER ALWAYS UNLOCKED. INSIDE LEVER IS ALWAYS FREE FOR IMMEDIATE EGRESS. SELF-CLOSING. STOP INCLUDED. PUSH SIDE MOUNTED.

**HARDWARE GROUP NO. 09.1**

For use on door #(s):

S-101A

Provide each SGL door(s) with the following:

QTY		DESCRIPTION	CATALOG NUMBER	FINISH	MFR
3	EA	HINGE	5BB1 4.5 X 4.5	652	IVE
1	EA	STOREROOM LOCK	ND80BD RHO	626	SCH
1	EA	SFIC	DISPOSABLE CORE	626	SCH
1	EA	SFIC CORE	PERMANENT CORE BY OWNER	626	SCH
1	EA	SURFACE CLOSER	4040XP CUSH MC	689	LCN
1	EA	KICK PLATE	8400 10" X 2" LDW B-CS	630	IVE
1	EA	WALL STOP	WS406/407CVX	630	IVE
3	EA	SILENCER	SR64	GRY	IVE

OPERATIONAL DESCRIPTION

STOREROOM LOCK - OUTSIDE LEVER FIXED. ENTRANCE BY KEY ONLY. INSIDE LEVER ALWAYS UNLOCKED. INSIDE LEVER IS ALWAYS FREE FOR IMMEDIATE EGRESS. SELF-CLOSING. STOP INCLUDED. PUSH SIDE MOUNTED.

**HARDWARE GROUP NO. 10.1**

For use on door #(s):

NOT USED

Provide each SGL door(s) with the following:

QTY		DESCRIPTION	CATALOG NUMBER	FINISH	MFR
3	EA	HINGE	5BB1 4.5 X 4.5	652	IVE
1	EA	ENTRANCE LOCK	ND53BD RHO	626	SCH
1	EA	SFIC CORE	PERMANENT CORE BY OWNER	626	SCH
1	EA	SFIC	DISPOSABLE CORE	626	SCH
1	EA	SURFACE CLOSER	4040XP SCUSH MC	689	LCN
1	EA	KICK PLATE	8400 10" X 2" LDW B-CS	630	IVE
3	EA	SILENCER	SR64	GRY	IVE

OPERATIONAL DESCRIPTION

OFFICE LOCK - TURN/PUSH-BUTTON LOCKING; PUSHING AND TURNING BUTTON LOCKS OUTSIDE LEVER, REQUIRING USE OF KEY UNTIL BUTTON IS MANUALLY UNLOCKED. PUSHBUTTON LOCKING; PUSHING BUTTON LOCKS OUTSIDE LEVER UNTIL UNLOCKED BY KEY OR BY TURNING INSIDE LEVER. INSIDE LEVER IS ALWAYS FREE FOR IMMEDIATE EGRESS. SELF-CLOSING. SPRING LOADED STOP INCLUDED. PUSH SIDE MOUNTED.

**HARDWARE GROUP NO. 10.2**

For use on door #(s):

W-111A            W-111B

Provide each PR door(s) with the following:

QTY		DESCRIPTION	CATALOG NUMBER	FINISH	MFR
6	EA	HINGE	5BB1HW 4.5 X 4.5	652	IVE
1	EA	PANIC HARDWARE	CDSI-9950WDC-L-DT-06-SNB	626	VON
1	EA	PANIC HARDWARE	CDSI-9950WDC-L-NL-06-SNB	626	VON
3	EA	SFIC	DISPOSABLE CORE	626	SCH
3	EA	SFIC CORE	PERMANENT CORE BY OWNER	626	SCH
1	EA	RIM HOUSING	AS REQ'D	626	SCH
2	EA	MORT CYL HOUSING	AS REQ'D	626	SCH
2	EA	SURFACE CLOSER	4040XP SCUSH MC	689	LCN
2	EA	KICK PLATE	8400 10" X 1" LDW B-CS	630	IVE
2	EA	SILENCER	SR64	GRY	IVE

OPERATIONAL DESCRIPTION

ACTIVE LEAF

CONCEALED CABLE EXIT DEVICE. FREE EGRESS AT ALL TIMES BY PRESSING PUSHBAR. ENTRY BY FIXED LEVER AFTER RETRACTING LATCHBOLT WITH KEY. LEVER ALWAYS FIXED. DOGGING BY THUMBTURN CYLINDER LOCKS DOWN THE PUSHBAR SO THE LATCHBOLT REMAINS RETRACTED AND DOOR FUNCTIONS AS A PUSH/PULL. THE CDSI SECURITY INDICATOR PROVIDES AT A GLANCE VERIFICATION OF THE "LOCKED /UNLOCKED" STATUS FROM INSIDE THE ROOM. DEVICE IS EITHER DOGGED DOWN (UNLOCKED) OR UNDOGGED (LOCKED). SELF-CLOSING. SPRING LOADED STOP INCLUDED. PUSH SIDE MOUNTED.

INACTIVE LEAF

CONCEALED CABLE EXIT DEVICE. FREE EGRESS AT ALL TIMES BY PRESSING PUSHBAR. ENTRY BY LEVER WHEN DEVICE DOGGED DOWN. LEVER ALWAYS FIXED. DOGGING BY THUMBTURN CYLINDER LOCKS DOWN THE PUSHBAR SO THE LATCHBOLT REMAINS RETRACTED AND DOOR FUNCTIONS AS A PUSH/PULL. THE CDSI SECURITY INDICATOR PROVIDES AT A GLANCE VERIFICATION OF THE "LOCKED /UNLOCKED" STATUS FROM INSIDE THE ROOM. DEVICE IS EITHER DOGGED DOWN (UNLOCKED) OR UNDOGGED (LOCKED). SELF-CLOSING. SPRING LOADED STOP INCLUDED. PUSH SIDE MOUNTED.

**HARDWARE GROUP NO. 11.1**

For use on door #(s):

W-112B

Provide each SGL door(s) with the following:

QTY		DESCRIPTION	CATALOG NUMBER	FINISH	MFR
3	EA	HINGE	5BB1 4.5 X 4.5	652	IVE
1	EA	DBL CYL STORE LOCK	ND66BD RHO	626	SCH
2	EA	SFIC CORE	PERMANENT CORE BY OWNER	626	SCH
2	EA	SFIC	DISPOSABLE CORE	626	SCH
1	EA	SURFACE CLOSER	4040XP SCUSH MC	689	LCN
1	EA	KICK PLATE	8400 10" X 2" LDW B-CS	630	IVE
3	EA	SILENCER	SR64	GRY	IVE

OPERATIONAL DESCRIPTION

STORE LOCK - KEY IN EITHER LEVER LOCKS/UNLOCKS BOTH LEVERS SELF-CLOSING.  
SPRING LOADED STOP INCLUDED. PUSH SIDE MOUNTED.