



**City of St. Charles School District
New Addition and Renovation at
George M. Null Elementary School
435 Yale Boulevard
St. Charles, Missouri 63301**

ADDENDUM #2

Date: April 03, 2019

Prepared For: City of St. Charles School District

Project Number: 17019

Architect: Dickinson Hussman Architects
11 East Lockwood Avenue
Suite 200
St. Louis, Missouri 63119
314-727-8500

This addendum is hereby made part of the contract documents of the above referenced project. This addendum supplements and/or amends the originally issued documents and all related addenda.

SPECIFICATION ADDENDUM

1. Modify hardware group 1 to read as follows.

2. HARDWARE GROUP NO. 01

For use on door #(s):
 X101

Provide each PR door(s) with the following:

QTY		DESCRIPTION	CATALOG NUMBER	FINISH	MFR
2	EA	CONT. HINGE	112XY EPT	US28	IVE
1	EA	POWER TRANSFER	EPT10 CON	⚡ 689	VON
1	EA	REMOVABLE MULLION	KR4954	689	VON
1	EA	<u>ELEC PANIC HARDWARE</u>	<u>RX-LC-QEL-99-EO-24VDC</u>	626	VON
1	EA	<u>ELEC PANIC HARDWARE</u>	<u>RX-LC-QEL-99-NL-OP-110MD-24VDC</u>	626	VON
1	EA	RIM HOUSING	AS REQ'D	626	SCH
<u>2</u>	EA	SFIC CORE	CONST CORE	622	SCH
<u>2</u>	EA	SFIC CORE	PERMANENT CORE BY OWNER	626	SCH
<u>1</u>	EA	MORT CYL HOUSING	AS REQ'D	626	SCH
2	EA	90 DEG OFFSET PULL	8190EZHD 12" O	630-316	IVE
2	EA	OH STOP	100S	630	GLY
2	EA	SURFACE CLOSER	4040XP EDA MC	689	LCN
2		CLOSER BRACKETS, SPACERS, ETC	AS REQ'D		LCN
1	EA	RAIN DRIP	142AA	AA	ZER
1	EA	MULLION SEAL	8780NBK PSA	BK	ZER
	SET	WEATHER STRIPPING	BY DOOR/FRAME MFR.		UNK
2	EA	DOOR SWEEP	39A	A	ZER
1	EA	THRESHOLD	655A-223	A	ZER
2	EA	WIRE HARNESS	CON-6W		SCH
2	EA	WIRE HARNESS	CON-12		SCH
2	EA	DOOR CONTACT	7764	⚡ 628	SCE
<u>1</u>	<u>EA</u>	<u>POWER SUPPLY</u>	<u>PS902 900-2RS</u> <u>CARD READER BY DIV</u> <u>28</u>	⚡ <u>LGR</u>	<u>SCE</u>

OPERATIONAL DESCRIPTION

ACTIVE LEAF RIM EXIT DEVICE. FREE EGRESS AT ALL TIMES BY PRESSING PUSHBAR. ENTRY BY PULL AFTER RETRACTING LATCHBOLT WITH KEY. LATCHBOLT CAN BE RETRACTED ELECTRICALLY FOR EITHER MOMENTARY OR EXTENDED PERIODS OF TIME ALLOWING DOOR TO BE PUSH/PULL FUNCTION. ACCESS CONTROL SOFTWARE OR PRESENTING AUTHORIZED CREDENTIAL SHALL RETRACT LATCHBOLT ELECTRICALLY ALLOWING DOOR TO BE OPENED. SELF-CLOSING WITH EDA ARM. EXTRA DUTY ARM. PUSH SIDE MOUNTED. CONCEALED OVERHEAD STOP

INACTIVE LEAF RIM EXIT DEVICE. FREE EGRESS AT ALL TIMES BY PRESSING PUSHBAR. ENTRY BY PULL WHEN DEVICE DOGGED DOWN ELECTRICALLY. LATCHBOLT CAN BE RETRACTED ELECTRICALLY FOR EITHER MOMENTARY OR EXTENDED PERIODS OF TIME ALLOWING DOOR TO BE PUSH/PULL FUNCTION. ACCESS CONTROL SOFTWARE OR PRESENTING AUTHORIZED CREDENTIAL SHALL RETRACT LATCHBOLT ELECTRICALLY ALLOWING DOOR TO BE OPENED. SELF-CLOSING WITH EDA ARM. EXTRA DUTY ARM. PUSH SIDE MOUNTED. CONCEALED OVERHEAD STOP
KEYED REMOVABLE MULLION
DOOR POSITION SWITCH(S) MONITOR WHETHER THE DOOR IS OPEN OR CLOSED.

DAWING ADDENDUM

ARCHITECURAL:

1. Sheet A0.1 CODE INFORMATION PLAN – Change the assumed existing building construction type from type IIA to IIB under paragraph 3. CONSTRCUTION TYPE (IBC SECTION 602)
2. Sheet A2.1 FIRST FLOOR PLAN – See supplemental drawing **SDA-01** for added inlet and electric water cooler on the East wall of Corridor 108

PLUMBING and ELECTRICAL:

1. See the attached addendum from FSG, dated April 03/2019

ATTACHMENTS:

1. Supplemental Architectural Drawing **SDA-01** (8.5x11)
2. FSG Bid Addendum #2 (2 pages)
3. Supplemental Plumbing Drawing **PX-01** (11x17)
4. Supplemental Plumbing Drawing **PX-02** (8.5x11)
5. Supplemental Plumbing Drawing **PX-03** (8.5x11)

April 03, 2019

**City of St. Charles School District
New Addition and Renovation at
George M. Null Elementary School**

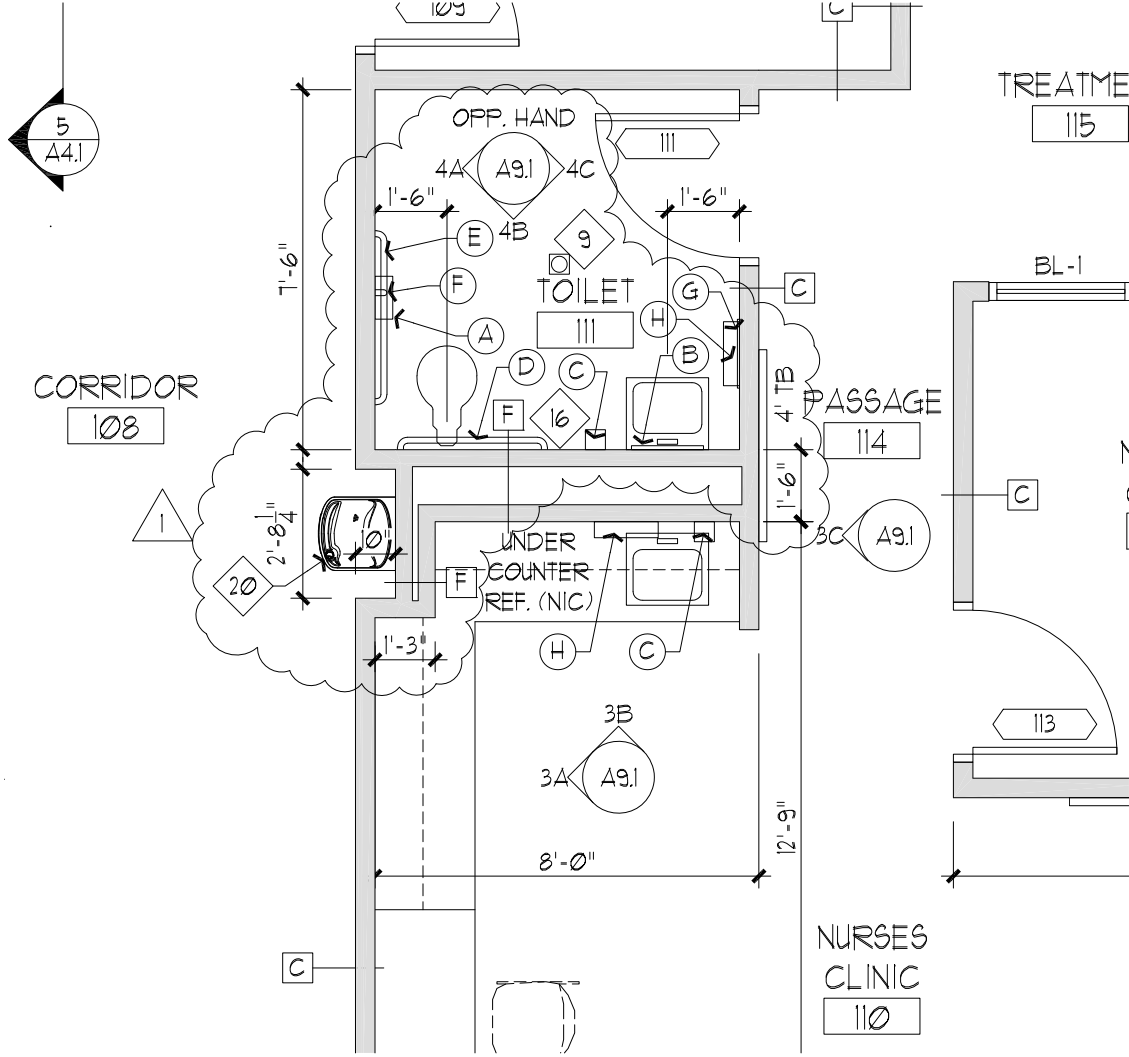
Project Number 17019

Addendum #2

Page 4 of 4




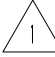

6. Supplemental Electrical Drawing **EX-01** (8.5x11)

END OF ADDENDUM 2



1 FLOOR PLAN
SCALE: 1/4"=1'-0"

FLOOR PLAN KEY NOTES

-  SAFEDEFEND SAFE LOCATION - BY OWNER
-  PROJECTOR ABOVE - SEE ELECTRICAL
-  ACOUSTICAL WALL PANELS - SEE INTERIOR ELEVATIONS
-   ELECTRIC WATER COOLER - SEE PLUMBING



Project For:

City of St. Charles School District R-VI
**New Addition and Renovation at
 George M. Null Elementary School**
 435 Yale Boulevard
 St. Charles, Missouri 63301

DATE April 03, 2019
 PROJ. NO. 17019

ARCHITECT

11 East Lockwood Avenue, Ste. 200
 St. Louis, MO 63119
 T 314 727 8500 F 314 727 4040
 www.dharch.com
 DICKINSON HUSSMAN ARCHITECTS

ORIGINAL DRAWING
 ORIGINAL DRAWING DATE

A2.1
 March 19, 2019

SDA-01



St. Charles George M. Null Elementary School

New Addition and Renovation

April 3, 2019

This addendum supersedes all conflicting portions of the Project Specifications and Drawings for the above referenced project. The Contractor shall include all omissions, additions and adjustments of all trades, subcontractors and consultants as may be necessary because of each revision, addition, substitution, clarification or adjustment included herein.

Item No. 1 – Drawing P1.0 – Plumbing New Work Plan:

See supplemental drawing PX-01 for plumbing revisions related to addition of new Electric Water Cooler (EWC-1).

Item No. 2 – Drawing P1.0 and Plumbing Fixture Schedule:

See supplemental drawing PX-02 for modification of water closet in Toilet 106 and additions to plumbing fixture schedule for EWC-1 and WC-2.

Item No. 3 – Drawing P2.0 – Plumbing Isometrics:

See supplemental drawing PX-03 for plumbing revisions related to addition of EWC-1.

Item No. 4 – Drawing E3.0 – Electrical New Work:

See supplemental drawing EX-01 for addition of GFCI receptacle for EWC-1 and power supply for Door X101. Power supply shall be wired back to spare circuit breaker #19 on new panel 'L1-5'.

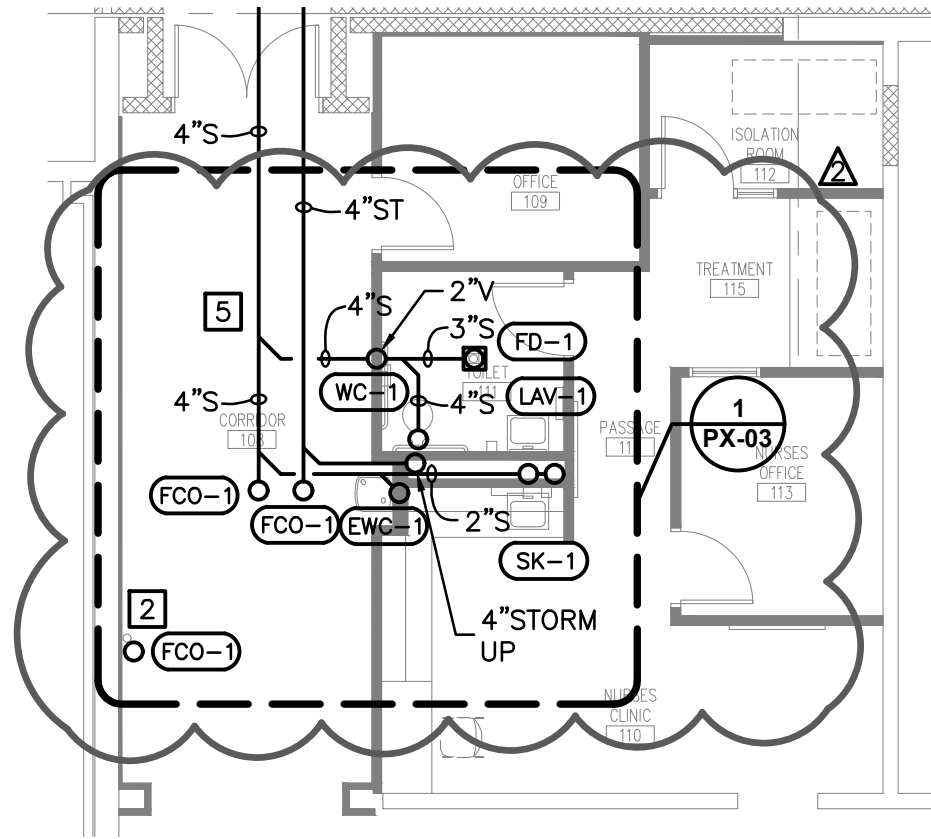
Item No. 5 – Drawing E3.0 – Keyed Note #3:

Keyed Note #3 on Sheet E3.0 shall be deleted and replaced with the following: "Furnish and install new card reader, HID iClass SE R10 Mini Mullion reader. Wire card reader back to existing panel in existing storage room. Coordinate power and data requirements with Dynamic Controls. Coordinate exact installation location of card reader with owner. Extend conduit up to accessible ceiling in corridor."

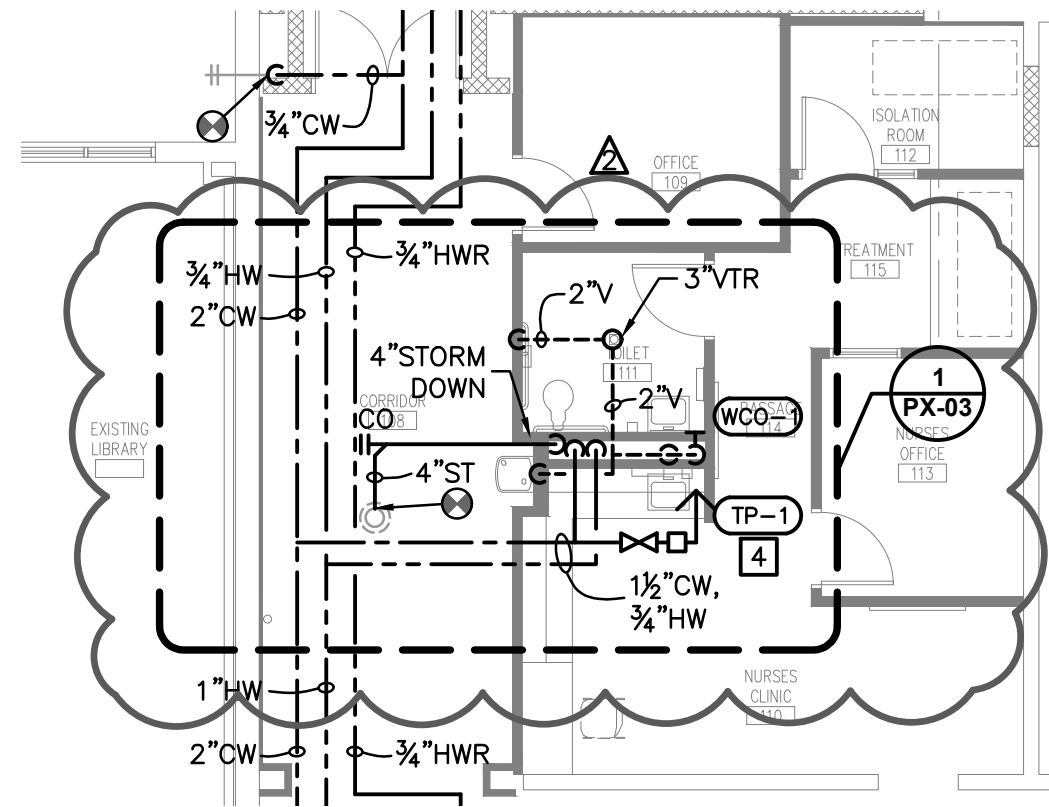
Item No. 6 – Drawing E3.0 – General Note #9:

General Note #9 on Sheet E3.0 shall be modified to include card readers in addition to the door position switches.

END OF ADDENDUM NO. 2



1 PLUMBING FOUNDATION NEW WORK PLAN
 PX-01 SCALE: 1/8"=1'-0" NORTH



2 PLUMBING NEW WORK PLAN
 PX-01 SCALE: 1/8"=1'-0" NORTH



ARCHITECT

11 East Lockwood Avenue, Ste. 200
 St. Louis, MO 63119
 T 314 727 8500 F 314 727 4040
 www.dharch.com
 DICKINSON HUSSMAN ARCHITECTS

Project For:

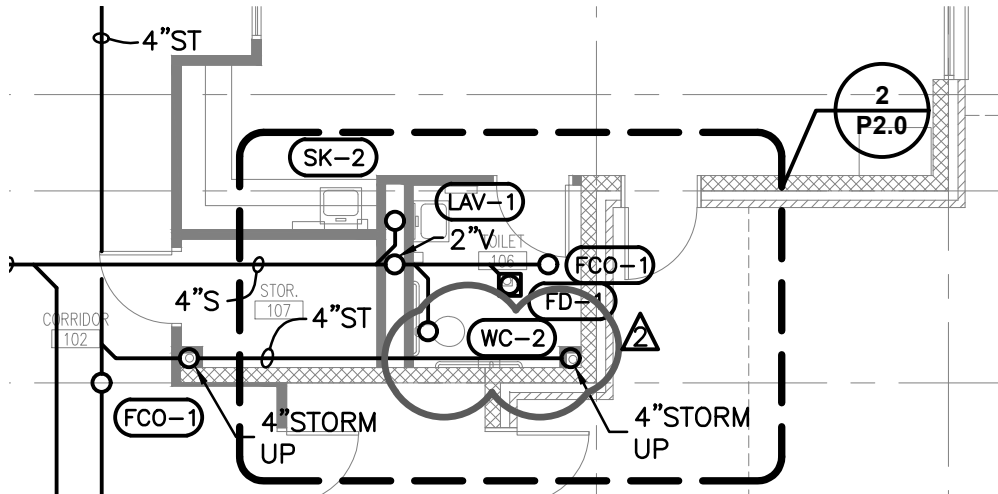
City of St. Charles School District R-VI
 New Addition and Renovation at
 George M. Null Elementary School
 435 Yale Boulevard
 St. Charles, Missouri 63301

ORIGINAL DRAWING
 ORIGINAL DRAWING DATE

P1.0
 March 19, 2019

DATE April 3, 2019
 PROJ. NO. 17019

PX-01



1
PX-02

PLUMBING FOUNDATION NEW WORK PLAN

SCALE: 1/8"=1'-0"



PLUMBING FIXTURE SCHEDULE

WC-2 FLOOR-MOUNTED WATER CLOSET (ADA ACCESSIBLE): AMERICAN STANDARD # 2299.001 "MADERA YOUTH" FLOWISE FLUSHOMETER TOILET, WHITE VITREOUS CHINA FIXTURE WITH ELONGATED BOWL, 14" HEIGHT, 1.6 GALLON PER FLUSH, TOP INLET SPUD AND DIRECT-FED SIPHON JET ACTION. SUPPLY WITH ALL REQUIRED MOUNTING HARDWARE.

FLUSH VALVE: AMERICAN STANDARD #6047.161.002 MANUAL TOILET FLUSH VALVE WITH ADJUSTABLE TAILPIECE, SPUD COUPLING AND FLANGE, SWEAT SOLDER ADAPTER WITH COVER TUBE AND CAST SET SCREW WALL FLANGE.

TRIM: AMERICAN STANDARD # 5901.100SS WHITE OPEN-FRONT CONTOURED SOLID PLASTIC, HEAVY DUTY SEAT LESS COVER WITH EVERCLEAN SURFACE, SELF SUSTAINING CHECK HINGES AND STAINLESS STEEL BOLTS.

EWC-2 ELECTRIC WATER COOLER (ADA ACCESSIBLE): ELKAY# LZS8WSSP WALL-MOUNTED SINGLE COOLER, ADA BARRIER FREE, FRONT AND SIDE PUSH ACTUATOR BARS, STAINLESS STEEL BOWL, BOTTLE FILLING STATION, FLEXIBLE POLYESTER ELASTOMER SAFETY BUBBLER AND GALVANIZED STEEL FRONT AND SIDES, CHILLER WITH 8.0 GALLONS PER HOUR CAPACITY, 50° F DRINKING WATER AT 80° F INLET TEMPERATURE. MOUNT WITH ORIFICE HEIGHT AT 33" ABOVE FINISHED FLOOR.



Project For:

City of St. Charles School District R-VI
**New Addition and Renovation at
 George M. Null Elementary School**
 435 Yale Boulevard
 St. Charles, Missouri 63301

DATE April 3, 2019
 PROJ. NO. 17019

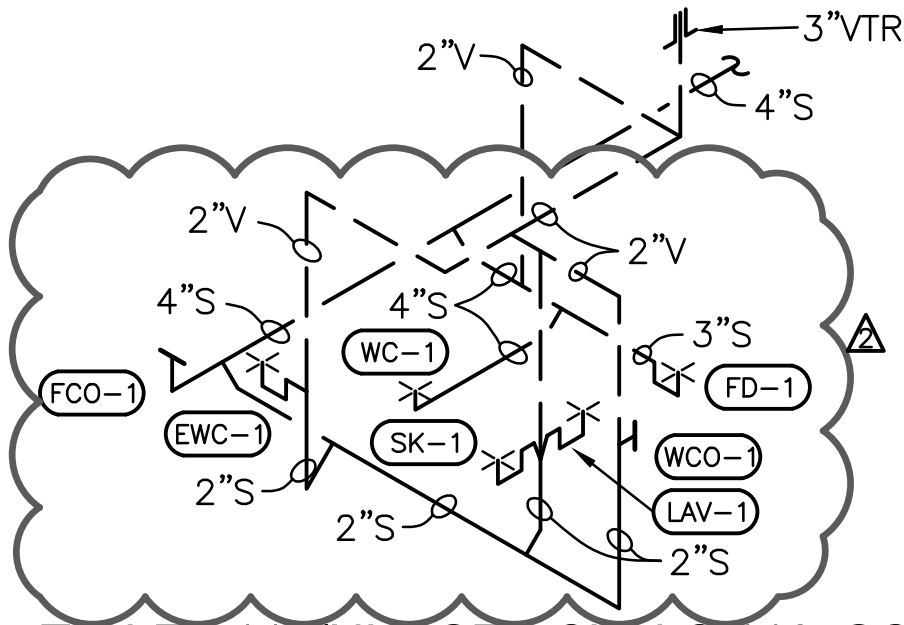
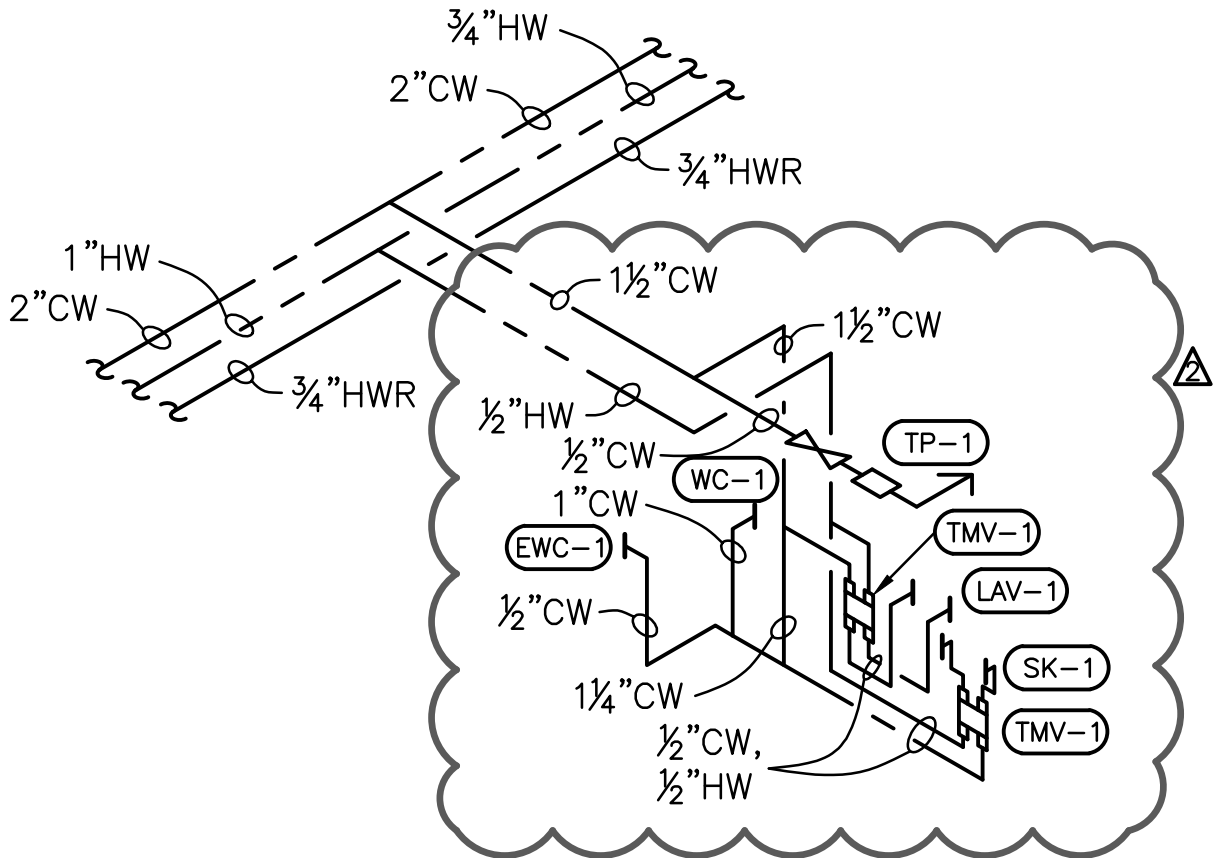
ARCHITECT

11 East Lockwood Avenue, Ste. 200
 St. Louis, MO 63119
 T 314 727 8500 F 314 727 4040
 www.dharch.com
 DICKINSON HUSSMAN ARCHITECTS

ORIGINAL DRAWING
 ORIGINAL DRAWING DATE

P0.0, P1.0
 March 19, 2019

PX-02



1 TOILET 111/NURSES CLINIC 110 ISOMETRIC
 PX-03 SCALE: NONE

Project For:

City of St. Charles School District R-VI
 New Addition and Renovation at
 George M. Null Elementary School
 435 Yale Boulevard
 St. Charles, Missouri 63301



11 East Lockwood Avenue, Ste. 200
 St. Louis, MO 63119
 T 314 727 8500 F 314 727 4040
 www.dharch.com
 DICKINSON HUSSMAN ARCHITECTS

ORIGINAL DRAWING
 ORIGINAL DRAWING DATE

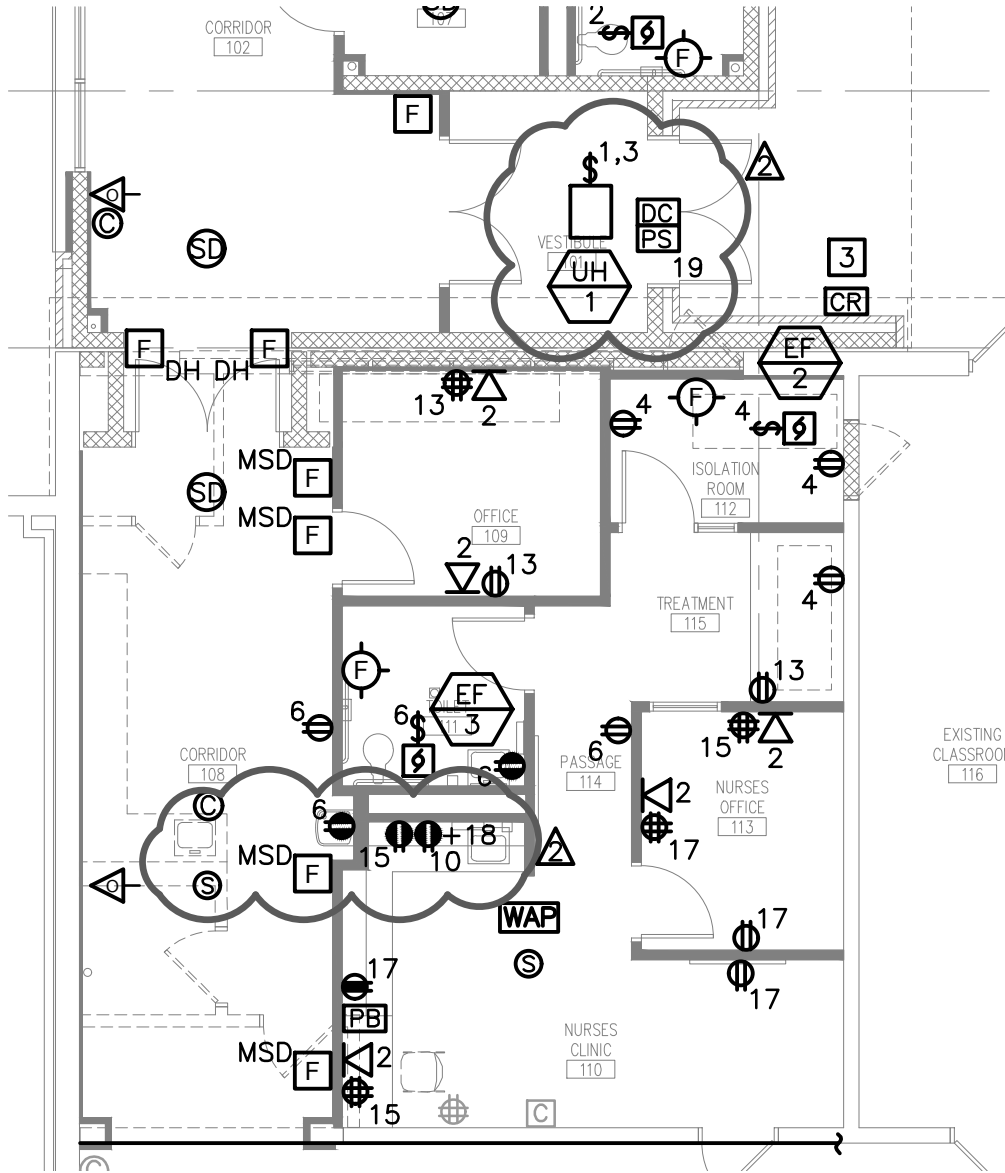
P2.0
 March 19, 2019

DATE
 PROJ. NO.

April 3, 2019
 17019

PX-03

ARCHITECT



1
POWER AND SYSTEMS NEW WORK PLAN

NORTH

EX-01
SCALE: 1/8"=1'-0"



Project For: City of St. Charles School District R-VI
 New Addition and Renovation at
 George M. Null Elementary School
 435 Yale Boulevard
 St. Charles, Missouri 63301

DATE April 3, 2019
 PROJ. NO. 17019

ARCHITECT
 11 East Lockwood Avenue, Ste. 200
 St. Louis, MO 63119
 T 314 727 8500 F 314 727 4040
 www.dharch.com
 DICKINSON HUSSMAN ARCHITECTS

ORIGINAL DRAWING E3.0
 ORIGINAL DRAWING DATE March 19, 2019

EX-01